



MISRIYYA

TERRACES

4 BEDROOM
TERRACES

A LUXURY
DEVELOPMENT BY



WWW.FORTEGCC.COM



4 BEDROOM
TERRACES



MISRIYYA
TERRACES



HIGHLIGHTS

Stylish Sophistication meets Architectural Grandeur

- 10 units of 4 Bedroom Terraces with BQ

MISRIYYA is designed to experience kingly living. The masterpiece is inspired by the finest set of well-profiled architects with amazing track records of luxurious property development.



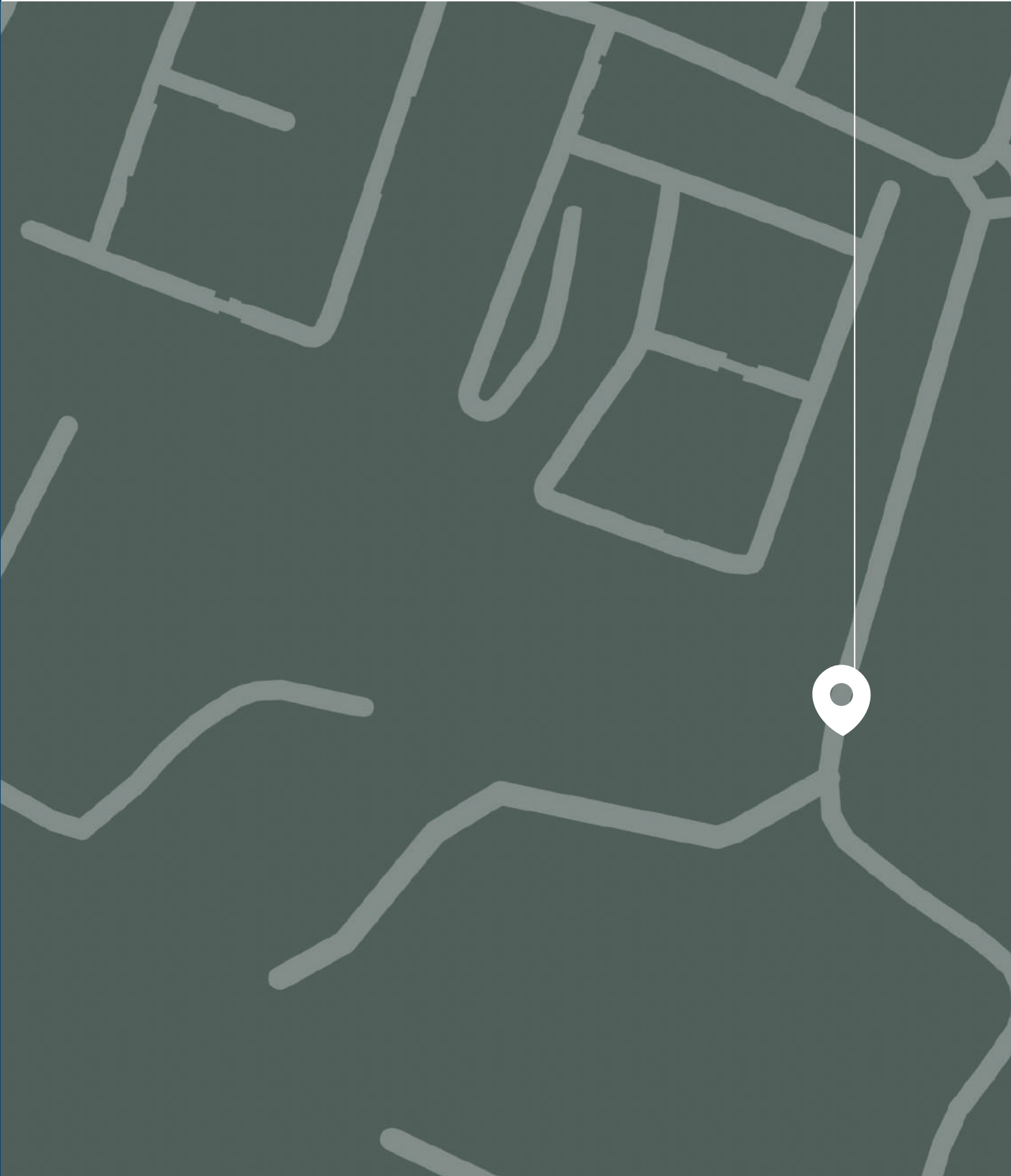


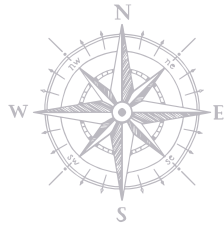
Traces

C



SITUATED IN THE ABSOLUTE HEART OF
THE CITY OF ABUJA, MISRIYYA ELEVATES
STYLE, AMENITY AND CONVENIENCE TO
LUXURIOUS NEW HEIGHTS





Katampe District
is the most affluent
neighborhood
of Abuja.

This property shares close proximity
to Abuja Highbrow areas, to international
Schools, malls.

Katampe extension is without a doubt the
Creme de la cream of all Abuja Districts.

The area has many hotels, and houses
one of Abuja most expensive properties.
it's a tasteful enclave for upwardly mobile
and the successful.

ESTATE FEATURES



5 MIN TO MAITAMA



10 MINS TO TOP
INTERNATIONAL SCHOOLS



15 MIN TO
WUSE MARKET



10 MINS TO
CENTRAL BUSINESS DISTRICT



10 MINS TO
WORLD CLASS HOSPITALS

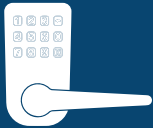


10 MIN TO
JABI LAKE MALL



40 MINS TO
NNAMDI AZIKWE AIRPORT

HOME FEATURES



SMART LOCK



CCTV



STARLINK BROADBAND
INTERNET



ESTATE GENERATOR



ADD-ON
HOME AUTOMATION



INVERTER PREWIRED



ESTATE SECURITY





LIVING ROOMS

Exquisite craftmanship & aesthetical masterpiece

A marriage of elegance and careful craftsmanship. The generous and bright living spaces create a truly contemporary ambience.

The spacious living areas use light-toned colour schemes, impressive textures and light features to give it a unique feel and other exotics features to give our owners a true taste of comfort.









INTERIORS ~ LIVING ROOMS



APPROXIMATELY 4.8 METERS
SMOOTH FINISH CEILINGS
IN MAIN LIVING ROOM.



APPROXIMATELY 3.5 METERS
SMOOTH FINISH CEILINGS
IN PRINCIPAL ROOMS



CHOICE OF ITALIAN
TILES AND MARBLE WITH
ACOUSTIC UNDERLAY



CUSTOM DESIGNED SOLID
CORE ENTRY DOOR WITH
SECURITY VIEW-HOLE



HIGH-PERFORMANCE
GLAZING/WINDOW
SYSTEM



LEVER DOOR HARDWARE
FOR INTERIOR DOORS IN
STAINLESS STEEL FINISH



TV/TELEPHONE
OUTLETS IN
PRINCIPAL ROOMS



LAUNDRY ROOM



EFFICIENT COOLING
AND VENTILATION
SYSTEM.



OUTDOOR ELECTRICAL
OUTLET ON THE
BALCONY



BUILT-IN CO₂ AND
SMOKE DETECTORS



SUITE WATER AND
ELECTRICITY

Make unforgettable memories with the people you care about in this spacious yet elegant and contemporary dining space providing the perfect ambience for those great family moments.



BEDROOMS

Take your fantasies to bed

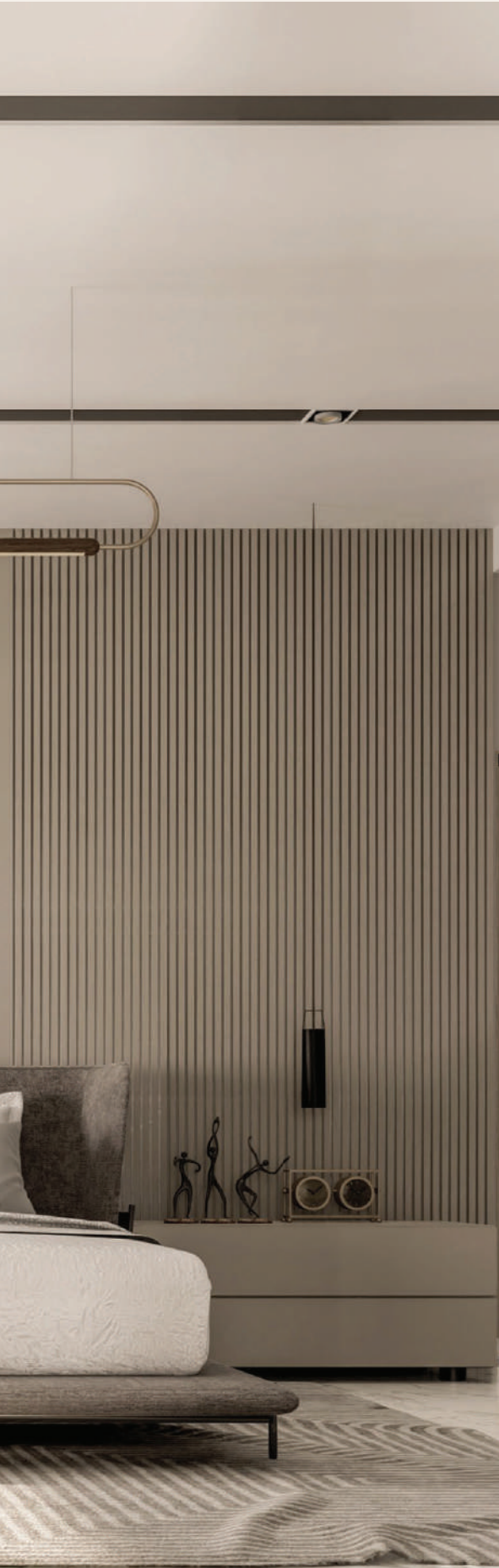
Delight in the spacious great bedroom layout that combines style with elegance.

Our bedrooms are built to give a feeling of comfort and security, away from the hustle and bustle of the day, offering pure serenity and palpable comfort.









INTERIORS BEDROOMS



APPROXIMATELY 4.1
METERS SMOOTH FINISH
CEILING



CHANDELIER



WALK-IN CLOSET



STATE OF THE ART
ELECTRONICS



HIGH-PERFORMANCE
GLAZING/WINDOW
SYSTEM



MARBLE FLOORING



LEVER DOOR HARDWARE
FOR INTERIOR DOORS IN
STAINLESS STEEL FINISH



EFFICIENT COOLING
AND VENTILATION
SYSTEM

KITCHENS

Inspired by taste Seasoned with love

Our spacious, modern, state-of-the-art kitchen, complete with high-end appliances is a delight for families who relish home-made meals.





INTERIORS / KITCHENS



CUSTOM DESIGNED
CONTEMPORARY KITCHEN
CABINETRY



PANEL READY,
24" INTEGRATED
REFRIGERATOR



ELECTRIC COOKTOP
AND WALL OVEN



CONCEALED
MICROWAVE



QUARTZ
COUNTERTOPS



BUILT-IN STAINLESS-
STEEL INSERT
EXHAUST FAN



CONTEMPORARY
HERRINGBONE TILE
BACKSPLASH



Ceiling mounted
light fixture



Stainless steel under-
mount single bowl sink
with polished chrome
single lever faucet







BATHROOMS

Inspired and Crafted for you

Relish the comfort of our masterfully finished bathrooms with premium sanitary wares inspired by art and nature, designed for royalty.

Our designer bathrooms with premium sanitary fittings make mornings the best part of your day.





Misriyya Terraces
by
Forte GCC

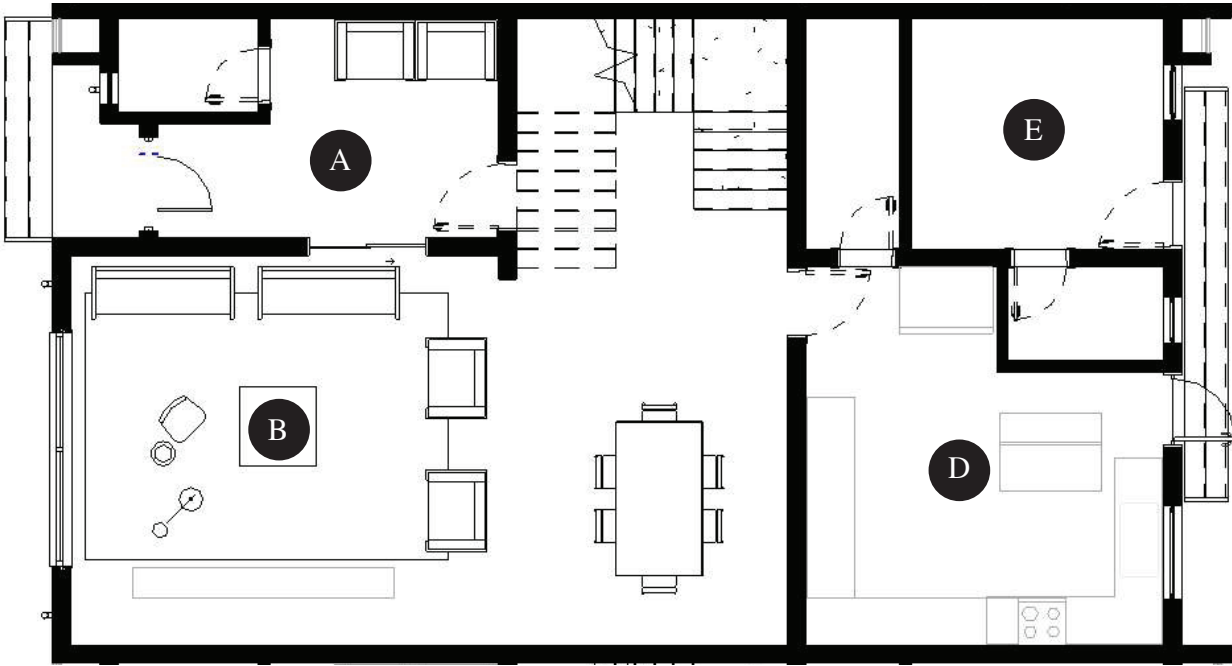


THE ULTIMATE SOPHISTICATION

Experiencing true luxury at a height
never before imagined where
luxury becomes you



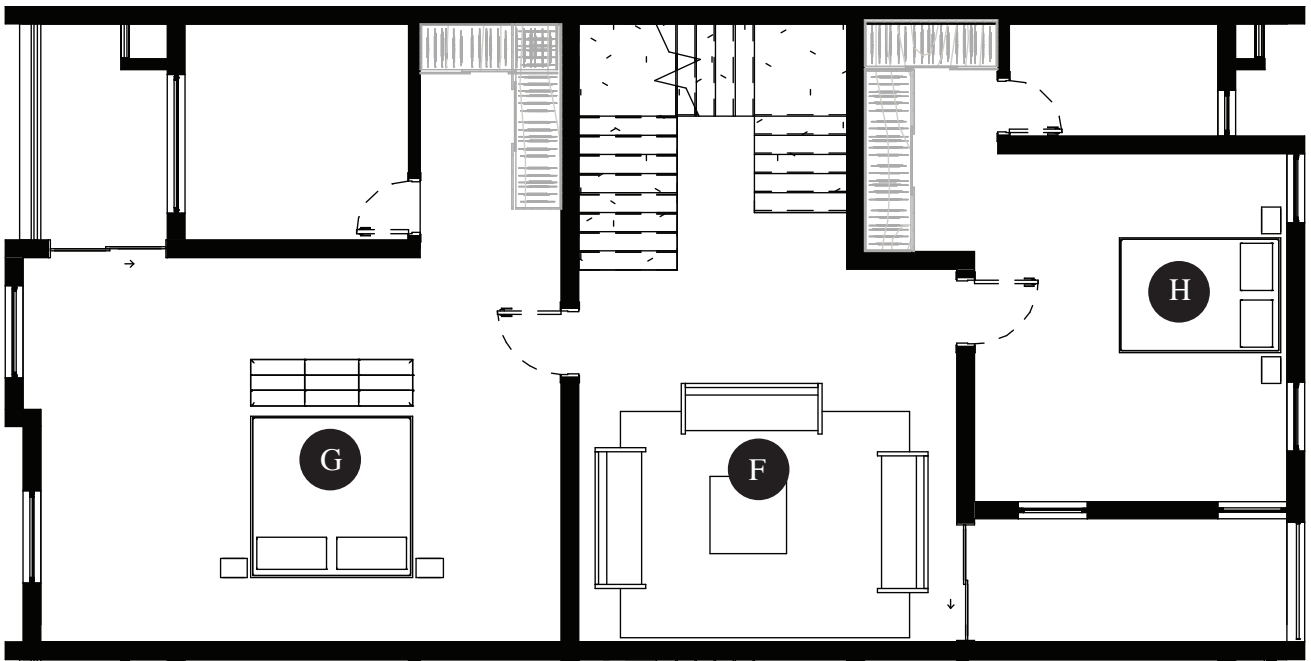
FLOOR PLANS



- A. Ante Room 6 Sqm
- B. Living Room/Dinning 37 Sqm
- D. Kitchen 17 Sqm
- E. BQ 8 Sqm



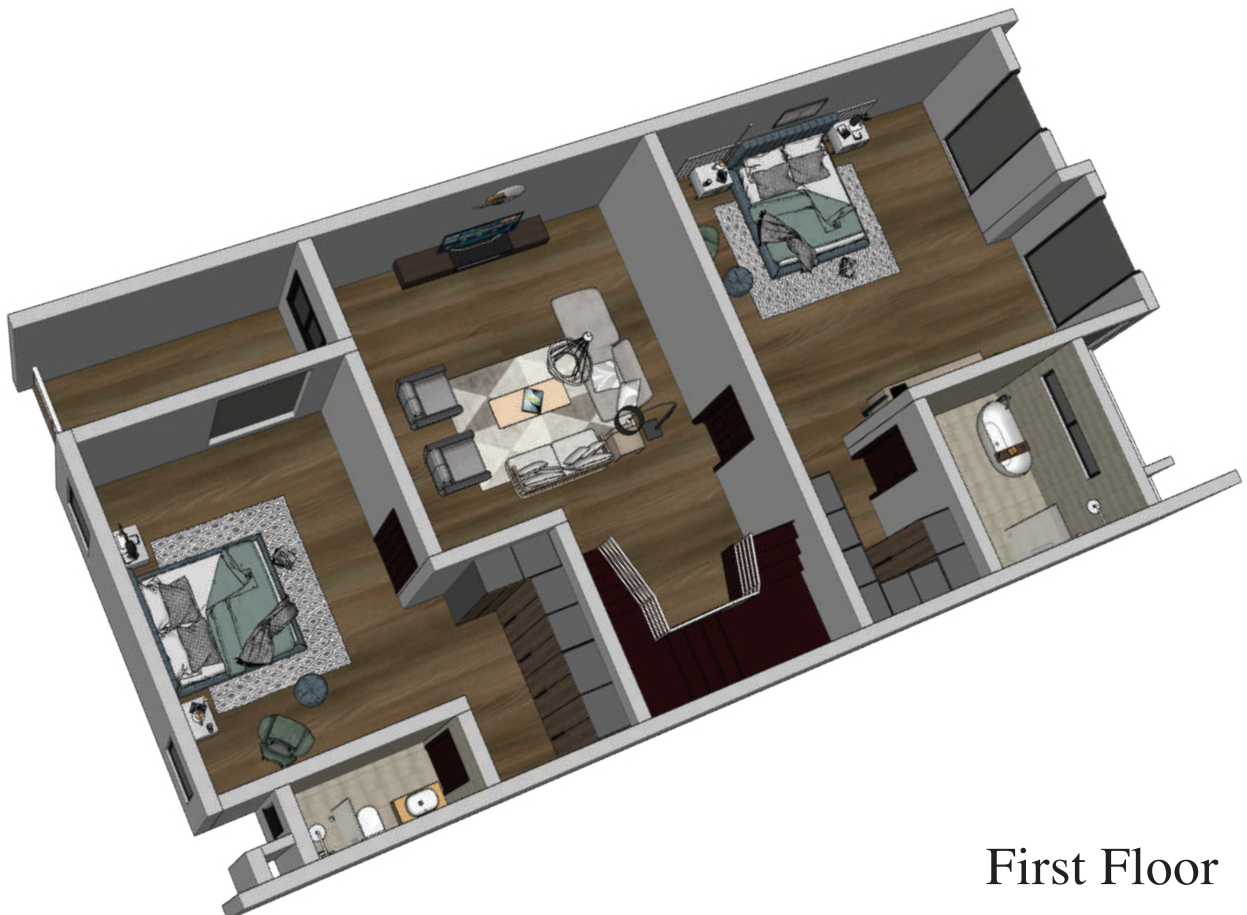
Ground Floor



F. Family Living Room 19 Sqm

G. Bedroom A 35 Sqm

H. Bedroom B 28 Sqm



First Floor



J. Master Bedroom 35 Sqm

K. Madams Room 28 Sqm



Second Floor

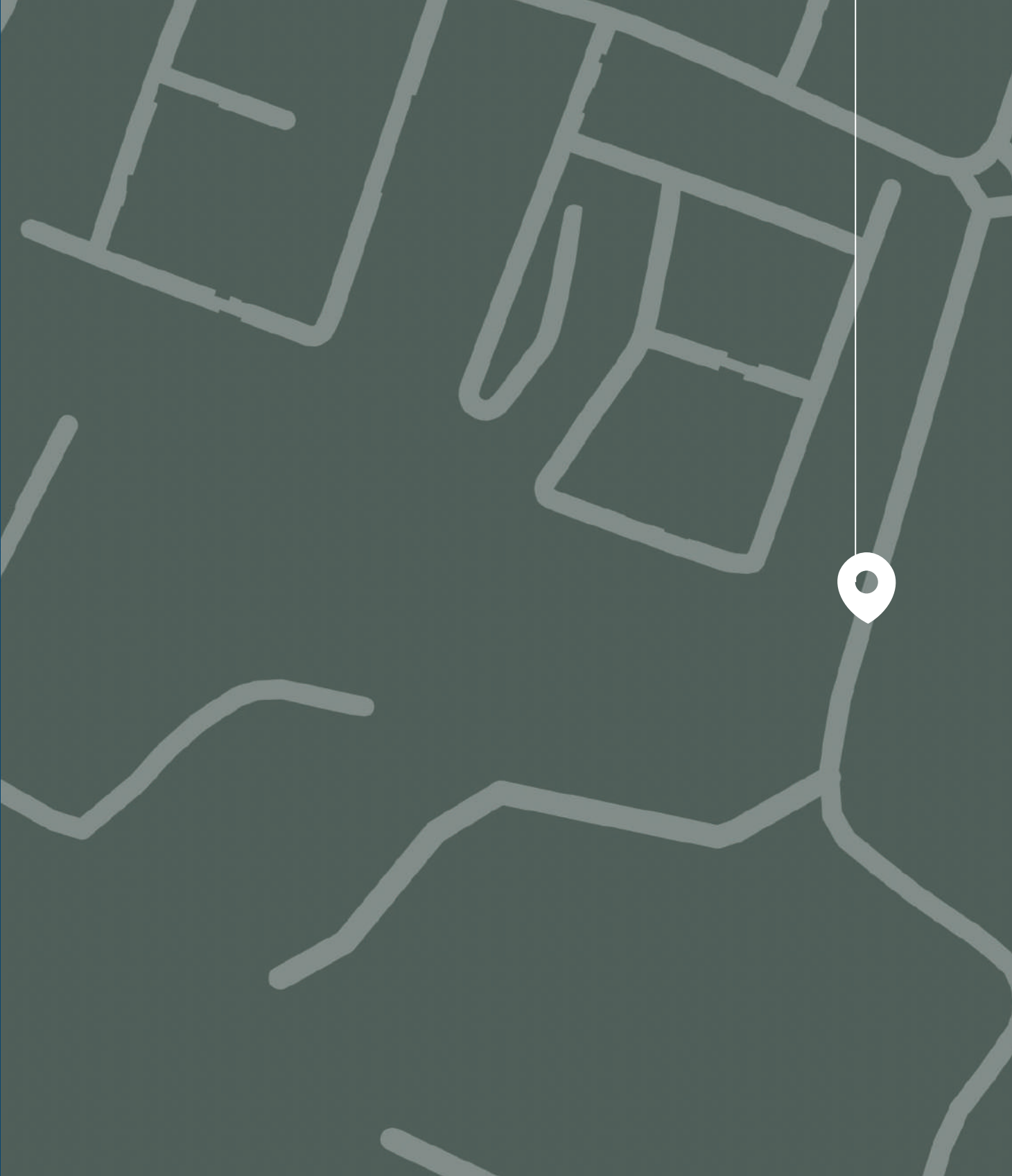
4 BEDROOM
TERRACES

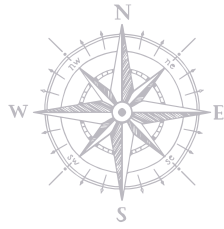


GUILDFORD
TERRACES



SITUATED IN THE ABSOLUTE HEART OF
THE CITY OF ABUJA, GUILDFORD ELEVATES
STYLE, AMENITY AND CONVENIENCE TO
LUXURIOUS NEW HEIGHTS





Katampe District
is the most affluent
neighborhood
of Abuja.

This property shares close proximity
to Abuja Highbrow areas, to international
Schools, malls.

Katampe extension is without a doubt the
Creme de la cream of all Abuja Districts.

The area has many hotels, and houses
one of Abuja most expensive properties.
it's a tasteful enclave for upwardly mobile
and the successful.

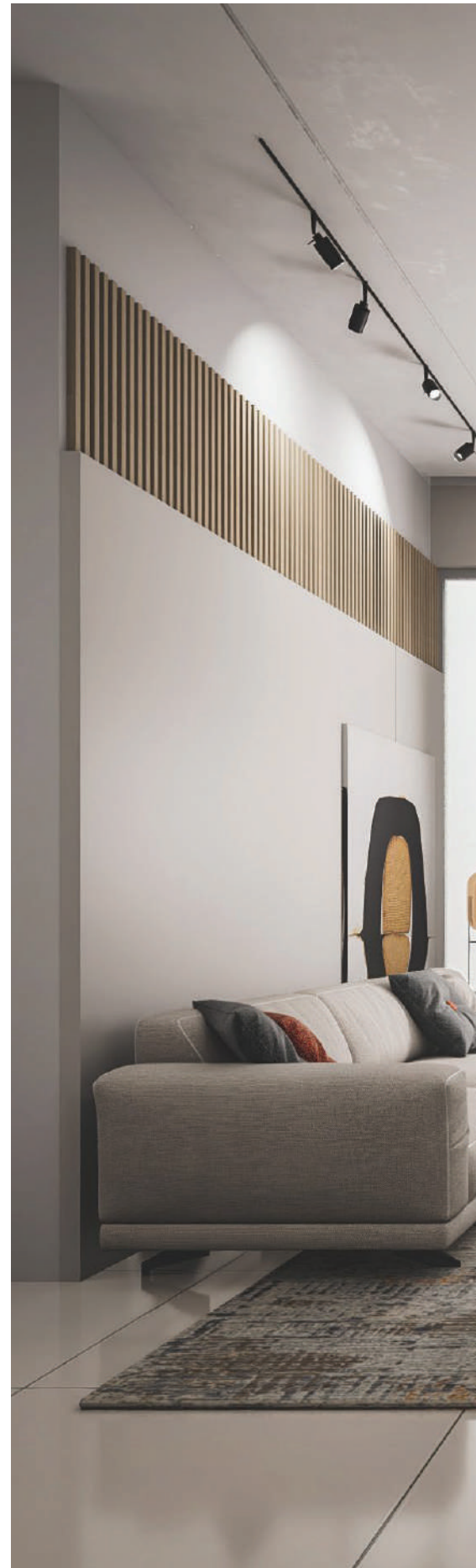
LIVING ROOMS

EXQUISITE CRAFTSMANSHIP & AESTHETICAL MASTERPIECE

A marriage of elegance and careful craftsmanship. The generous and bright living spaces create a truly contemporary ambience.

The spacious living areas use light-toned colour schemes, impressive textures and light features to give it a unique feel and other exotics features to give our owners a true taste of comfort.

Pendant Lights | Home
Automation Fittings | High
Floor to Ceiling | Spot Lights
| Perfect Finishing







ESTATE FEATURES



5 MIN TO MAITAMA



10 MINS TO TOP
INTERNATIONAL SCHOOLS



15 MIN TO
WUSE MARKET



10 MINS TO
CENTRAL BUSINESS DISTRICT



10 MINS TO
WORLD CLASS HOSPITALS



10 MIN TO
JABI LAKE MALL



40 MINS TO
NNAMDI AZIKWE AIRPORT

HOME FEATURES



SMART LOCK



CCTV



STARLINK BROADBAND
INTERNET



ESTATE GENERATOR



ADD-ON
HOME AUTOMATION



INVERTER PREWIRED



ESTATE SECURITY

BEDROOMS

TAKE YOUR FANTASIES TO BED

Delight in the spacious great bedroom layout that combines style with elegance.

Our bedrooms are built to give a feeling of comfort and security, away from the hustle and bustle of the day, offering pure serenity and palpable comfort.

Pendant Lights | Home
Automation Fittings | High
Floor to Ceiling | Spot
Lights | Perfect Finishing

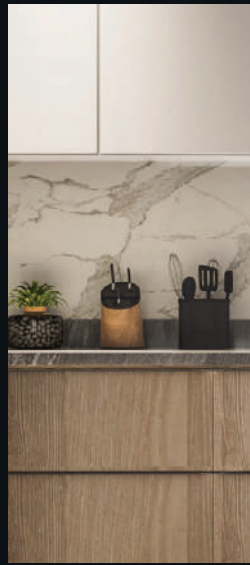




KITCHENS

INSPIRED BY TASTE SEASONED WITH LOVE

Our spacious, modern, state-of-the-art kitchen, complete with high-end appliances is a delight for families who relish home-made meals.





INTERIORS KITCHENS



Custom designed
contemporary kitchen
cabinetry



Panel ready,
24" integrated
refrigerator



Electric cooktop
and wall oven



Concealed
Microwave



Quartz
Countertops



Built-in stainless-
steel insert exhaust
fan



Contemporary
herringbone tile
backsplash



Ceiling mounted
light fixture



Stainless steel under-
mount single bowl sink
with polished chrome
single lever faucet





Interiors Bedrooms



Approximately 4.1
meters smooth finish
ceiling



Chandelier



Walk-in Closet



State of the Art
Electronics



High-performance
glazing/window
system



Marble Flooring



Lever door hardware
for interior doors in
stainless steel finish



Efficient cooling and
ventilation System





INTERIORS BATHROOMS



Custom designed contemporary bathroom vanity



Exclusively Sanitary ware in all toilets.



Glass shower stall with chrome fixtures, as per plan



Integrated sink and back lit vanity mirror with built-in shelf



Polished chrome single lever bathroom faucet



Choice of full height porcelain wall tiles in tub and shower



Pressure-balanced mixing valve for tub and shower



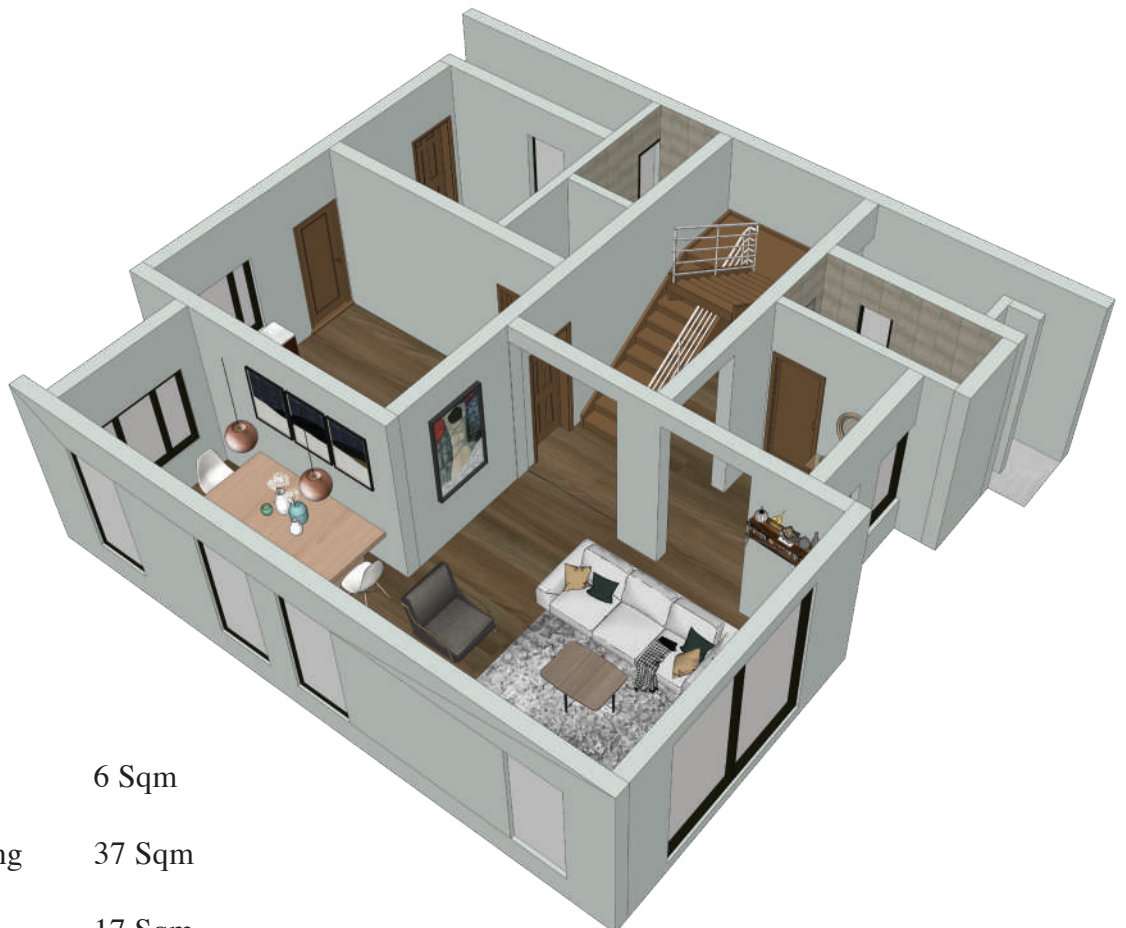
Ceiling light above bathtub or shower



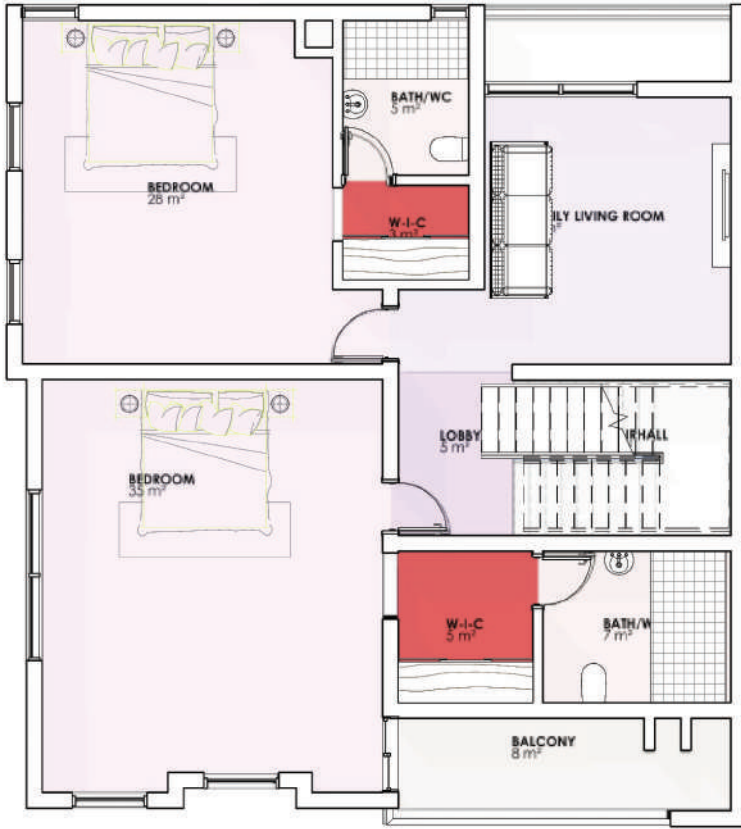
FLOOR PLANS



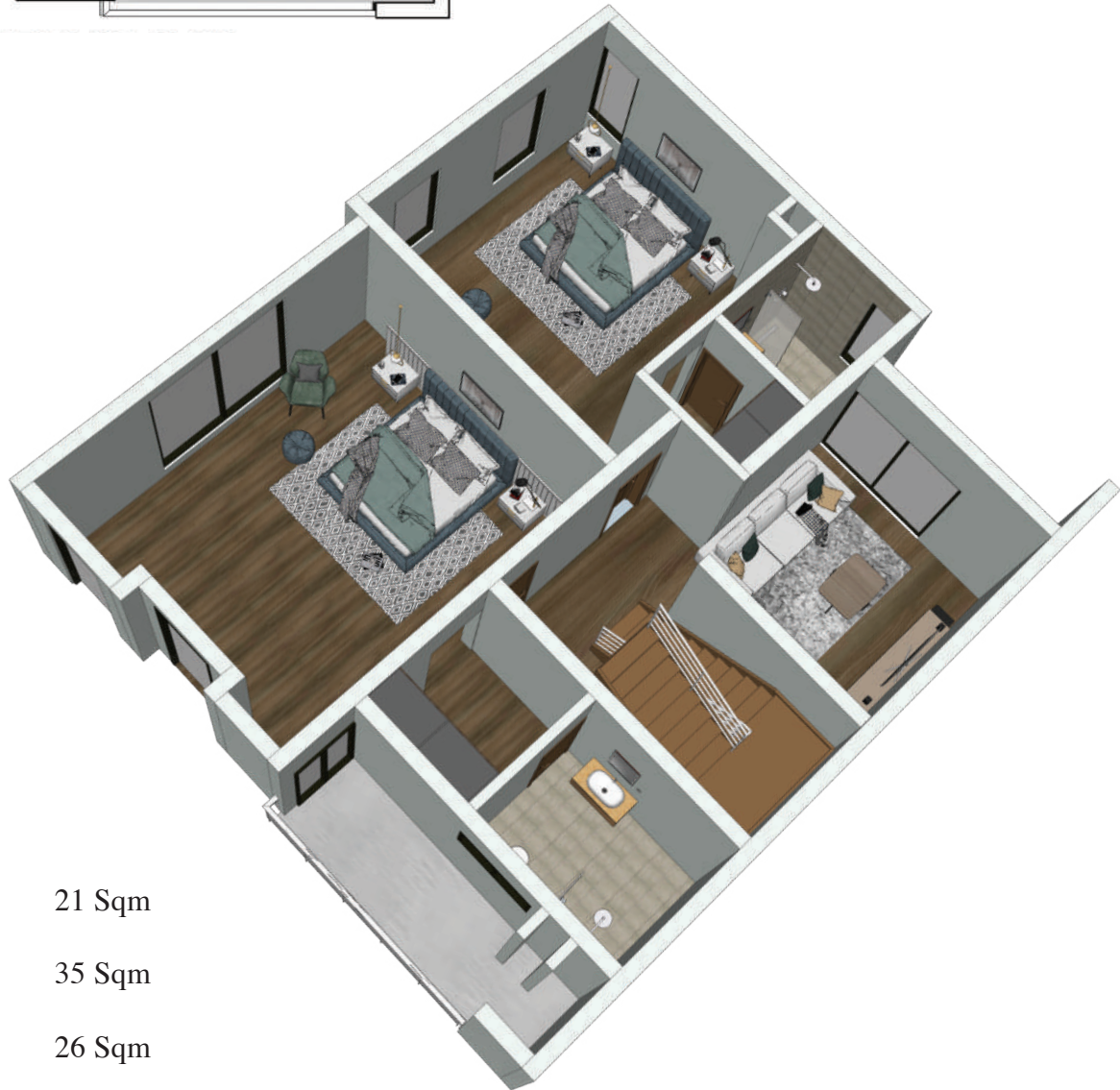
GROUND FLOOR



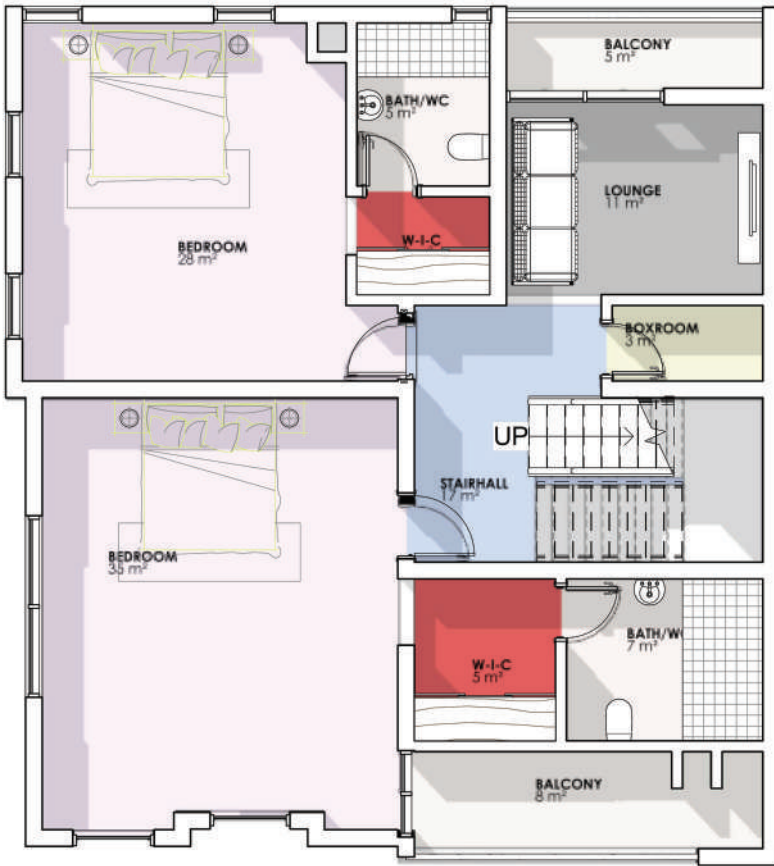
Ante Room	6 Sqm
Living Room/Dinning	37 Sqm
Kitchen	17 Sqm
BQ	8 Sqm



FIRST FLOOR

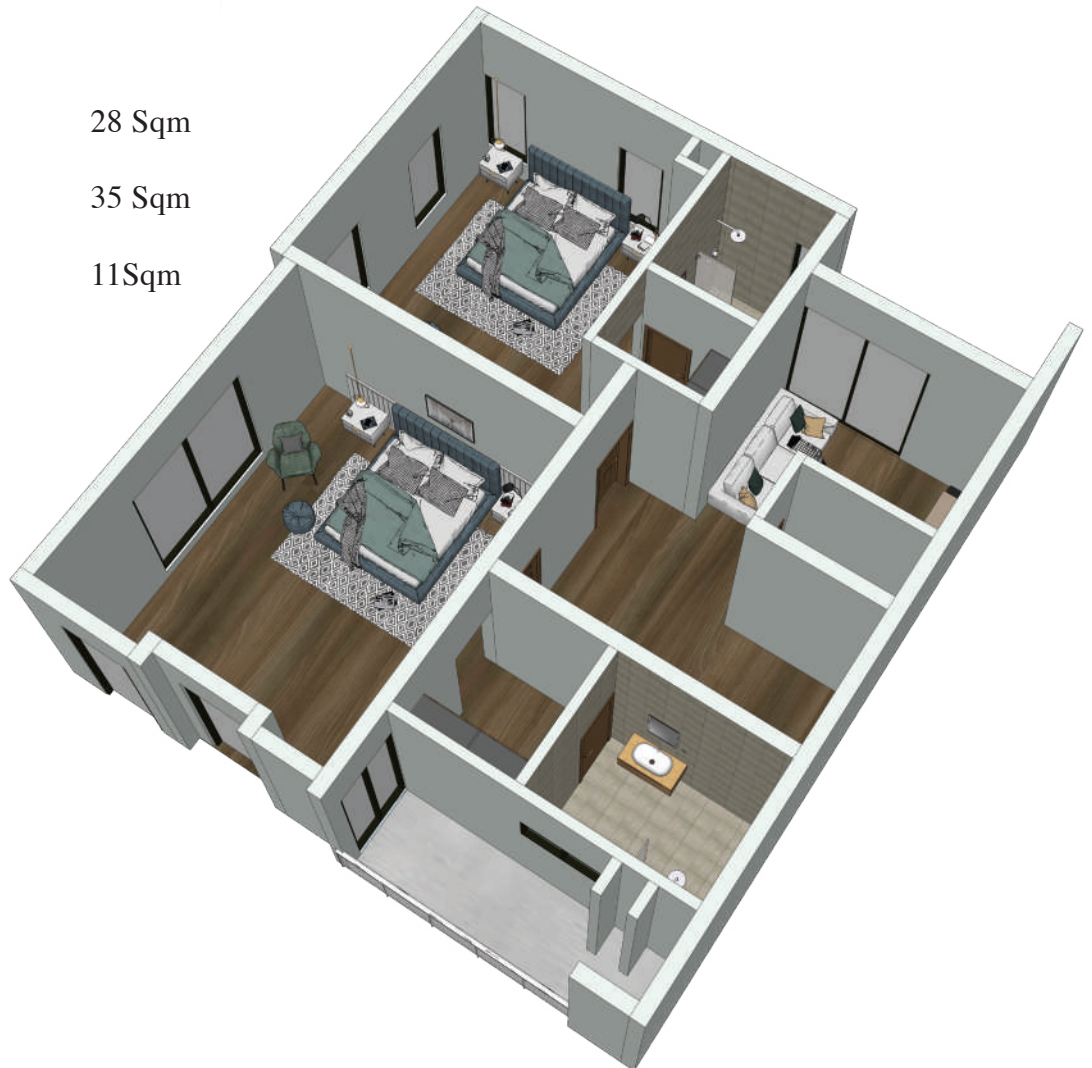


Living Room	21 Sqm
Bedroom A	35 Sqm
Bedroom B	26 Sqm



SECOND FLOOR

Bedroom C	28 Sqm
Bedroom D	35 Sqm
Lounge	11 Sqm





INVESTMENT

QUALITY IS WHAT REMAINS LONG AFTER PRICE IS LONG FORGOTTEN

FORTEGCC offers homeowners and investors, the opportunity to own a home that is built to set a new standard, with impeccable finishing, making it a choice masterpiece.

Either for living or investment, there unique collector's items provide the assurance of comfort and massive return on investment for those who want nothing but to stand out!

MODE OF PAYMENT _____

TERRACES

Outright : 5% Discount

6 Months Plan: 40% Down Payment

Mortgage: 40% Down Payments

CONTACT US:

EMAIL: INFO@FORTEGCC.COM

WWW.FORTEGCC.COM

